



GLORY

PRODUCT CATALOGUE

**Agricultural machinery
- Diesel Tractor**

GLORY

Qingdao Ever Glory Machinery Co., Ltd

www.everglorymachinery.com
Email: market@everglorymachinery.com

TEL : +86-18153282521



GLORY

About GLORY



GLORY Machinery Group, located in Qingdao, specializes in the design, development and production of construction and agricultural machinery. The products covers mining machinery, road machinery, agricultural machinery and so on.

With nearly 20 years of industry experience, GLORY machinery has been exported to South America, Europe, the Middle East, Southeast Asia, Africa and other more than 30 countries and regions.

GLORY has modern production workshops, advanced production lines, multi-functional laser cutting equipment, CNC bending machine, welding machine and other intelligent production equipments. GLORY has researched and manufactured more than 100 models of machinery, which also independently researches the axle by ourselves. GLORY could supply a variety of construction and agricultural implements to achieve one stop solutions, which could meet many conditions and improve the work efficiency.

In order to provide customers with immersive experience services, GLORY has branches in Singapore and Philippines to ensure timely and effective supports for our customers.

GLORY is committed to building the long-term and stable cooperation with customers and achieving the common development.



GLORY

About GLORY



20+ years industry experience

GLORY has the own factories with professional industry experience to ensure the better performance.

Rapid delivery and service

Branches in Philippines for rapid supply and service.

Timely after-sales service

GLORY provides timely online lifetime free support and branches service offline.

Integrated solutions

Agricultural machinery from farming, seeding, management, harvest to processing.
Construction machinery from excavation, demolition, construction to mining.

Tractor

<http://www.everglorymachinery.com>

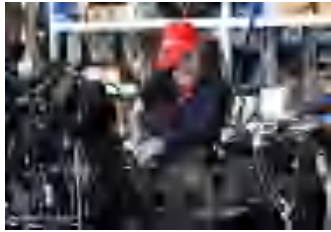


GLORY



Classis

Assembling independently ensures the stable quality



Axle

Research, develop and assemble independently



Engine

Laidong KM495, Huafeng 4102 are available.



Cab

Electrophoretic paint which is more rust-proof





GLORY

Various of agricultural implements for option, such as Plow, Harrow, Rotary tiller, Seeder, Fertilizer spreader, Mower, etc.



Moldboard plow



Turnover plow



Disc plow



Disc harrow



Powered harrow



Rotary harrow



Rotary tiller



Seeder



Seeder



Fertilizer spreader



Flail mower



Hay rake



Round baler



Square baler



Sprayer



Trailer



GLORY

Tractor **GL254**

Min operating weight
1700KG

Rated power (KW)
18.4kw

Rated speed(r/min)
2400r/min

GL254 technical specifications

GL254-TY

GL254-TY	
Model	GL254
Dimensions with frame (mm)	3640*1530*2330
Dimensions with cab (mm)	3640*1530*2530
Wheelbase (mm)	1860
Min operating weight (kg)	1550(Without cab)/1700(With cab)
Min ground clearance (mm)	330
Emission standard	National II
Engine standard	LaiDong KM385Z
Optional engines	/
Pattern	Inline 4 cylinder
Rated power (KW)	18.4
Rated speed (r/min)	2400
Clutch	10inch ; Dry ; Single disc
Gearbox	8+2(Optional8+8)
Axle	TY
Tire	6.00-16/9.5-24
PTO speed (r/min)	540/720
Hydraulic lifting system type	Strong pressure double cylinder
Balance weight	Front11KG×4/Rear25KG×2



GLORY



Tractor **GL504**

Min operating weight
1900KG

Rated power (KW)
36.8kw

Rated speed(r/min)
2400r/min

GL504 technical specifications

GL504-TE	
Model	GL504
Dimensions with frame (mm)	3740×1530×2330
Dimensions with cab (mm)	3740×1530×2530
Wheelbase (mm)	1870
Min operating weight (kg)	1750(Without cab)/1900(With cab)
Min ground clearance (mm)	350
Emission standard	National II
Engine standard	LaiDong KM495Z
Optional engines	Laidong 490T, Yunnei YN25Z, Yangdong 490Z, Changchai 490Z, Sida 490Z
Pattern	Inline 4 cylinder
Rated power (KW)	36.8
Rated speed (r/min)	2400
Clutch	10inch ; Dry ; Single disc
Gearbox	8+8(Optional8+2)
Axle	TE
Tire	7.50-16/11.2-28
PTO speed (r/min)	540/720
Hydraulic lifting system type	Strong pressure double cylinder
Balance weight	Front11KG×4/Rear25KG×2



GLORY



Tractor **GL704**

Min operating weight
2580KG

Rated power (KW)
51.5kw

Rated speed(r/min)
2400r/min

GL704 technical specifications

GL704-TBS	
Model	GL704
Dimensions with frame (mm)	4030×1750×2500
Dimensions with cab (mm)	4030×1750×2700
Wheelbase (mm)	2050
Min operating weight (kg)	2380(Without cab)/2580(With cab)
Min ground clearance (mm)	380
Emission standard	National II
Engine standard	LaiDong KM4102Z
Optional engines	YTO 4108Z, Yunnei YN38T, Yangdong 4100T, Changchai 495T, Sida 4102Z
Pattern	Inline 4 cylinder
Rated power (KW)	51.5
Rated speed (r/min)	2400
Clutch	10inch ; Dry ; Double disc
Gearbox	12+12(Optional16+8)
Axle	TBS
Tire	8.3-24/11-32
PTO speed (r/min)	540/760
Hydraulic lifting system type	Strong pressure double cylinder
Balance weight	Front25KG×6/Rear25KG×2



GLORY



Tractor **GL904**

Min operating weight
2780KG

Rated power (KW)
66.2kw

Rated speed(r/min)
2400r/min

GL904 technical specifications

GL904-TBL	
Model	GL904
Dimensions with frame (mm)	4030×1750×2500
Dimensions with cab (mm)	4030×1750×2700
Wheelbase (mm)	2050
Min operating weight (kg)	2580(Without cab)/2780(With cab)
Min ground clearance (mm)	380
Emission standard	National II
Engine standard	LaiDong KM4102ZT
Optional engines	Laidong 4108T, Yunnei YN38T, Yangdong 4105T, Changchai 4102T, Sida 4105T
Pattern	Inline 4 cylinder
Rated power (KW)	66.2
Rated speed (r/min)	2400
Clutch	11inch ; Dry ; Double disc
Gearbox	12+12(Optional16+8)
Axle	TBL
Tire	9.5-24/14.9-30
PTO speed (r/min)	540/760
Hydraulic lifting system type	Strong pressure double cylinder
Balance weight	Front25KG×8/Rear45KG×4



GLORY

Tractor **GL1004**

Min operating weight
4100KG

Rated power (KW)
73.5kw

Rated speed(r/min)
2200r/min



GL1004 technical specifications

GL1004-TD3S

GL1004-TD3S	
Model	GL1004
Dimensions with frame (mm)	4920×2210×2830
Dimensions with cab (mm)	4920×2210×3030
Wheelbase (mm)	2550
Min operating weight (kg)	3800(Without cab)/4100(With cab)
Min ground clearance (mm)	380
Emission standard	National II
Engine standard	Weichai Huafeng4105T
Optional engines	YTO 4110T
Pattern	Inline 4 cylinder
Rated power (KW)	73.5
Rated speed (r/min)	2200
Clutch	12inch ; Dry ; Double disc
Gearbox	12+12
Axle	TD3S
Tire	12.4-24/16.9-34
PTO speed (r/min)	760/850
Hydraulic lifting system type	Strong pressure double cylinder
Balance weight	Front40KG×11/Rear43KG×4



GLORY



Tractor **GL1204**

Min operating weight
4300KG

Rated power (KW)
88.2kw

Rated speed(r/min)
2200r/min

GL1204 technical specifications

GL1204-TD	
Model	GL1204
Dimensions with frame (mm)	4920×2210×2830
Dimensions with cab (mm)	4920×2210×3030
Wheelbase (mm)	2550
Min operating weight (kg)	4000(Without cab)/4300(With cab)
Min ground clearance (mm)	490
Emission standard	National II
Engine standard	Weichai Huafeng4105T (Lovol style)
Optional engines	YTO 4110T
Pattern	Inline 4 cylinder
Rated power (KW)	88.2
Rated speed (r/min)	2200
Clutch	14inch ; Dry ; Double disc
Gearbox	16+8/(Optional12+12)
Axle	TD
Tire	12.4-24/16.9-34
PTO speed (r/min)	760/850
Hydraulic lifting system type	Strong pressure double cylinder
Balance weight	Front40KG×11/Rear43KG×4



GLORY

Tractor **GL1304**

Min operating weight
4400KG

Rated power (KW)
95.6kw

Rated speed(r/min)
2200r/min



GL1304 technical specifications

GL1304-TD	
Model	GL1304
Dimensions with frame (mm)	4920×2210×2830
Dimensions with cab (mm)	4920×2210×3030
Wheelbase (mm)	2550
Min operating weight (kg)	4100(Without cab)/4400(With cab)
Min ground clearance (mm)	490
Emission standard	National II
Engine standard	Weichai Huafeng4105T (LovoI style)
Optional engines	Weichai Huafeng 6105Z,YTO 4110T
Pattern	Inline 4 cylinder
Rated power (KW)	95.6
Rated speed (r/min)	2200
Clutch	14inch ; Dry ; Double disc
Gearbox	16+8/(Optional24+8)
Axle	TD
Tire	12.4-24/16.9-34
PTO speed (r/min)	760/850
Hydraulic lifting system type	Strong pressure double cylinder
Balance weight	Front40KG×11/Rear43KG×4



GLORY

Tractor **GL1604**

Min operating weight
5780KG

Rated power (KW)
117.6kw

Rated speed(r/min)
2200r/min



GL1604 technical specifications

GL1604-TF	
Model	GL1604
Dimensions with frame (mm)	5050×2400×2800
Dimensions with cab (mm)	5050×2400×3000
Wheelbase (mm)	2630
Min operating weight (kg)	5480(Without cab)/5780(With cab)
Min ground clearance (mm)	470
Emission standard	National II
Engine standard	YTO 6M
Optional engines	Weichai Huafeng 6118Z
Pattern	Inline 4 cylinder
Rated power (KW)	117.6
Rated speed (r/min)	2200
Clutch	14inch ; Dry ; Double disc
Gearbox	16+8/(Optional24+8)
Axle	TF
Tire	14.9-26/18.4-38
PTO speed (r/min)	760/850 760/1000
Hydraulic lifting system type	Strong pressure double cylinder
Balance weight	Front40KG×11/Rear60KG×4



GLORY



Tractor **GL1804**

Min operating weight
5980KG

Rated power (KW)
132.4kw

Rated speed(r/min)
2200r/min

GL1804 technical specifications

GL1804-TF	
Model	GL1804
Dimensions with frame (mm)	5050×2400×2800
Dimensions with cab (mm)	5050×2400×3000
Wheelbase (mm)	2630
Min operating weight (kg)	5680(Without cab)/5980(With cab)
Min ground clearance (mm)	470
Emission standard	National II
Engine standard	YTO 6M
Optional engines	Weichai Huafeng 6118Z
Pattern	Inline 4 cylinder
Rated power (KW)	132.4
Rated speed (r/min)	2200
Clutch	14inch ; Dry ; Double disc
Gearbox	16+8/(Optional24+8)
Axle	TF
Tire	14.9-26/18.4-38
PTO speed (r/min)	760/850 760/1000
Hydraulic lifting system type	Strong pressure double cylinder
Balance weight	Front40KG×11/Rear60KG×4



GLORY

Tractor **GL2004**

Min operating weight
6450KG

Rated power (KW)
147.0kw

Rated speed(r/min)
2200r/min

GL2004 technical specifications

GL2004-TF

Model	GL2004
Dimensions with frame (mm)	5050×2400×2800
Dimensions with cab (mm)	5050×2400×3000
Wheelbase (mm)	2630
Min operating weight (kg)	6150(Without cab)/6450(With cab)
Min ground clearance (mm)	470
Emission standard	National II
Engine standard	YTO 6M
Optional engines	Weichai Huafeng 6118Z
Pattern	Inline 4 cylinder
Rated power (KW)	147.0
Rated speed (r/min)	2200
Clutch	14inch ; Dry ; Double disc
Gearbox	16+8/(Optional24+8)
Axle	TF
Tire	14.9-26/18.4-38
PTO speed (r/min)	760/850 760/1000
Hydraulic lifting system type	Strong pressure double cylinder
Balance weight	Front40KG×11/Rear60KG×4



GLORY



Tractor **GL2404**

Min operating weight
7800KG

Rated power (KW)
177.0kw

Rated speed(r/min)
2200r/min

GL2404 technical specifications

GL2404-TS	
Model	GL2404
Dimensions with frame (mm)	5600×2780×3000
Dimensions with cab (mm)	5600×2780×3200
Wheelbase (mm)	2830
Min operating weight (kg)	7400(Without cab)/7800(With cab)
Min ground clearance (mm)	450
Emission standard	National II
Engine standard	Yuchai
Optional engines	Shangchai
Pattern	6 cylinder
Rated power (KW)	177.0
Rated speed (r/min)	2200
Clutch	15inch ; Dry ; Double disc
Gearbox	16+16/(Optional32+32)
Axle	TS
Tire	16.9-28/18.4-42
PTO speed (r/min)	760/850 850/1000
Hydraulic lifting system type	Strong pressure double cylinder
Balance weight	Front40KG×11/Rear60KG×4



GLORY

Tractor **GL2604**

Min operating weight
8500KG

Rated power (KW)
191.2kw

Rated speed(r/min)
2200r/min

GL2604 technical specifications

GL2604-TS

Model	GL2604
Dimensions with frame (mm)	5600×2780×3000
Dimensions with cab (mm)	5600×2780×3200
Wheelbase (mm)	2830
Min operating weight (kg)	8100(Without cab)/8500(With cab)
Min ground clearance (mm)	450
Emission standard	National II
Engine standard	Yuchai
Optional engines	Shangchai
Pattern	6 cylinder
Rated power (KW)	191.2
Rated speed (r/min)	2200
Clutch	15inch ; Dry ; Double disc
Gearbox	16+16/(Optional32+32)
Axle	TS
Tire	16.9-28/18.4-42
PTO speed (r/min)	760/850 850/1000
Hydraulic lifting system type	Strong pressure double cylinder
Balance weight	Front40KG×11/Rear60KG×4



GLORY

Tractor **GL3004**

Min operating weight
9840KG

Rated power (KW)
221.0kw

Rated speed(r/min)
2200r/min

GL3004 technical specifications

GL3004-TS

Model	GL3004
Dimensions with frame (mm)	5600×2780×3000
Dimensions with cab (mm)	5600×2780×3200
Wheelbase (mm)	2830
Min operating weight (kg)	9440(Without cab)/9840(With cab)
Min ground clearance (mm)	450
Emission standard	National III
Engine standard	Yuchai
Optional engines	Shangchai
Pattern	6 cylinder
Rated power (KW)	221.0
Rated speed (r/min)	2200
Clutch	15inch ; Dry ; Double disc
Gearbox	16+16/(Optional32+32)
Axle	TS
Tire	16.9-28/18.4-42
PTO speed (r/min)	760/850 850/1000
Hydraulic lifting system type	Strong pressure double cylinder
Balance weight	Front40KG×11/Rear60KG×4



GLORY



Qingdao Ever Glory Machinery Co., Ltd

Address: Huangdao District, Qingdao City, Shandong Province

TEL: +86-18153282521

Email: market@everglorymachinery.com

Website: www.everglorymachinery.com